

STRIKEPOINT GOLD

OCCUPATIONAL HEALTH & SAFETY COVID-19 GUIDELINES

2020 FIELD SEASON - WILLOUGHBY & PORTER IDAHO PROJECTS

COVID-19 INFORMATION & AWARENESS

Ensuring adequate education and awareness around the prevention and risks of COVID-19 is paramount in reducing its spread. StrikePoint Gold has prepared these COVID-19 Occupational Health & Safety Guidelines to support its 2020 field season activities. These Guidelines will be updated as new Provincial protocols and standards are made available. The following actions are in place to ensure all site personnel are informed and aware.

Education – All workers are encouraged to complete the following online course on pandemic awareness prior to arriving into Stewart, BC, for their work rotation. The course takes approximately 30 minutes to complete and outlines best practices for workplaces to avoid the spread of COVID-19, and other viruses or pathogens. The course will be reviewed during the initial Occupational, Health & Safety Meeting.

<https://worksitesafety.ca/product/training/online/coronavirus-covid-19/>

Prevention – All workers will be required to complete the COVID-19 Self Assessment & Disclosure Statement (Appendix A) before arriving into Stewart for the commencement of their work rotation. Access to site will not be permitted until the Disclosure Statement has been provided to your supervisor. All contractors will also be required to complete the Statement prior to gaining access to site.

Awareness – Workers and Contractors will be provided with these Guidelines, which include the following COVID-19 posters:

- STOP – Covid-19 Poster
- Physical Distancing Poster
- Hand Washing Poster

Personnel are expected to familiarize themselves with the Guidelines and Posters. Ongoing awareness of the prevention and risks of COVID-19 will be managed through topical discussion at weekly Occupational, Health & Safety Meetings.

In addition to the measures set out above, StrikePoint Gold has appointed a COVID-19 Coordinator as an available resource for workers and contractors. Introduction to the role of the COVID-19 Coordinator will be made during initial orientation and will be more fully discussed during the first Occupational Health & Safety meeting.

Your COVID-19 Coordinator is:
~ Marilyne Lacasse ~
mlacasse@outboundsconsult.com

While all workers share responsibility in following occupational health and safety guidelines while in Stewart and on-site at StrikePoint Gold projects, the COVID-19 Coordinator is ultimately responsible for the effective implementation and monitoring of these Guidelines. In the event workers observe lack of compliance with these Guidelines by other workers, or observe behaviours or activities that make them feel their health and safety may be at risk, workers must report compliance incidences directly to the COVID-19 Coordinator.

ON-SITE PHYSICAL DISTANCING MEASURES

Appropriate physical distancing measures of a 2-metre distance between personnel will be practiced at all times. Worker pods, based on job functions, will be established for accommodation, meals and breaks in Stewart, as well as transportation to/from site(s). The COVID-19 Coordinator will maintain a list of all worker pods, including details around any necessary reassignments.

Work Site Safety Training indicated a 1-metre physical distance was acceptable, but Provincial Standards dictate 2-metre distancing must be maintained.

*** 2-metre physical distancing must always be maintained between Worker Pods while on-site at the StrikePoint Gold projects.**

*** 2-metre physical distancing should be maintained to the maximum extent possible within your own Worker Pod while on-site at the StrikePoint Gold projects.**

Accommodation – workers will be provided with individual accommodation, consisting of their own bed and washroom facilities, in a hotel in Stewart. Workers are not allowed to enter one another's rooms, and a 2-metre distancing protocol must be maintained at all times.

Meals – worker pods will take their meals together. Meal times will be staggered amongst worker pods and an effort to maintain 2 metres apart will be made at all times amongst all workers. Specific restaurant COVID-19 policies and protocols will be respected and adhered to at all times.

Breaks – breaks will be staggered, per worker pod, and an effort to maintain 2 metres apart will be made at all times amongst all workers.

Job Functions – an effort to maintain 2 metres physical distance between workers within the worker pod should be made during the carrying out of individual job functions. Physical

distancing measures across worker pods carrying out job functions must be maintained at all times unless doing so presents the risk of a dangerous occurrence.

On-site Transportation – In situations where workers are required to travel together in vehicles or helicopters to the work site, they will travel in a designated vehicle for their worker pod. The size of this work pod must not exceed the total number of seats in the designated vehicle. Workers must wash hands prior to entry of the vehicle and wear a facemask or soft cloth mask covering their nose and mouth to prevent droplet transmission. Workers must again wash their hands upon exit of the vehicle.

Workers must travel in their Work Pod in their Designated Truck

*** Wash/Sanitize your hands before entering your truck**

*** Wear Your Face Mask**

*** Wash/Sanitize your hands again upon exiting your truck**

ON-SITE RISK REDUCTION MEASURES

Hand Sanitizer Stations – regular and proper hand washing has proven to be one of the most effective measures individuals can take to reduce the risk of contracting and/or transmitting the spread of COVID-19. Workers will be provided with individual hand sanitizers; additionally, hand sanitizer stations will be established at the entrance/exit of all common areas, including the core shack, truck/transportation muster point, and inside all transport vehicles.

Communal Equipment/Tools – each worker is responsible for the proper cleaning and disinfecting of each piece of equipment/tool they use to carry out their job functions. The worker must clean the equipment/tool twice: **FIRST**) at the beginning of their shift, before they begin using the equipment/tool and **SECOND**) at the end of their shift, when they have finished using the piece of equipment/tool. This procedure must be followed for each piece of equipment/tool touched during the course of a worker's shift.

Communal Equipment/Tools MUST be cleaned TWICE daily:

*** FIRST at the beginning of your shift**

*** SECOND at the end of your shift**

Personal Equipment/Tools – each worker is encouraged to not share their personal equipment/tools. It is recommended that personal equipment/tools be regularly disinfected as a precaution. Any personal equipment/tools that are shared must be disinfected as set out above in Communal Equipment/Tools.

Transportation – each vehicle will have a designated driver from each worker pod. Each designated driver is responsible for the proper cleaning and disinfecting of their truck, paying particular attention to the following high-touch points:

- door handles (inside and out)
- window buttons
- steering wheel and controls
- wiper and turn signal handle
- shifter
- dash controls + buttons
- ventilation grilles and knobs
- rear-view mirror
- armrests
- grab handles, seat adjusters
- seat belt buckles; and
- radio and communication devices

For each instance of use, the designated driver must clean the truck twice: FIRST) before any worker enters the truck, and SECOND) after workers exit the truck.

Cleaning schedules will be maintained and available for examination by the COVID-19 Coordinator.

OFF-SITE PHYSICAL DISTANCING MEASURES

Transportation – workers will be transported to site in their designated worker pod where feasible. Pick ups will occur at pre-arranged muster points. Workers must wash hands prior to entry of the vehicle and wear a facemask or soft cloth mask covering their nose and mouth to prevent droplet transmission. Workers must again wash their hands upon exit of the vehicle.

The designated driver must not exit the vehicle during pick-ups, nor have any form of community contact.

Each designated driver is responsible for the proper cleaning and disinfecting of their truck, paying particular attention to the following high-touch points:

- door handles (inside and out)
- window buttons
- steering wheel and controls
- wiper and turn signal handle
- shifter
- dash controls + buttons
- ventilation grilles and knobs
- rear-view mirror
- armrests
- grab handles, seat adjusters
- seat belt buckles; and
- radio/communication devices

For each instance of use, the designated driver must clean the truck twice: FIRST) before any worker enters the truck, and SECOND) after workers exit the truck.

Trucks MUST be cleaned TWICE for each instance of use:

*** FIRST before workers enters the truck**

*** SECOND after workers exit the truck**

Cleaning schedules will be maintained and available for examination by the COVID-19 Coordinator.

Supplies – all supplies in/out of site will be managed through designated expeditors who must maintain physical distancing measures of no less than 2 meters spacing between workers at all times and must respect Stewart businesses' COVID-19 policies and protocols.

INFECTION CONTROL

Suspected COVID-19 Infection – in the event you experience any of the following symptoms you must immediately report to the COVID-19 Coordinator:

- fever
- chills
- cough
- shortness of breath
- sore throat and painful swallowing
- stuffy or runny nose
- loss of sense of smell
- headache
- muscle aches
- fatigue
- loss of appetite

Self-isolation, monitoring and care will be provided for workers that become ill, as well as to protect other workers on-site from potential transmission. Self-isolation provisions include:

- an individual hotel room, that includes a separate shower/toilet only for that worker
- meals delivered to the worker in isolation
- check-ins a minimum of twice daily to ascertain if medical assistance is required
- wage continuance

In the event two or more workers become ill, the local Medical Health Officer will be notified at the following contact:

Northern Health - Communicable Disease Hub
Phone (during business hours):
1-855-565-2990

On-call medical health officer after hours phone:
1-250-565-2000, press 7
ask for the medical health officer on call

Options for exiting Stewart will be discussed between the self-isolating worker and the COVID-19 Coordinator, and decisions made on a case-by-case basis. Options may include exiting via regular transport or medevac in severe cases.

COVID-19 Self Assessment & Disclosure Statement

StrikePoint Gold's priority is the ongoing health and safety of its workers, as well as preventing the spread of COVID-19. Your answers to the following questions will help us determine if now is the right time for you to enter our work site. All employees and contractors must complete this Disclosure Statement prior to entering site.

Name:	
Email:	Phone #:
Worker Pod:	Temperature: (Taken immediately prior to site entry by designated supervisor)

Please Circle

Are you experiencing any symptoms of COVID-19 such as fever, cough, sneezing, sore throat, difficulty breathing?	Yes	No
Have you provided care or been in close contact with a person who has exhibited symptoms of COVID-19 in the past 14 days?	Yes	No
Have you provided care or been in close contact with a person who has tested positive of COVID-19 in the past 14 days?	Yes	No
Have you travelled outside of Canada in the past 14 days?	Yes	No
Have you been in close contact with a person who has travelled outside of Canada in the past 14 days?	Yes	No
Have you been in close contact with a person who has been required to self-isolate (quarantine) in the past 14 days?	Yes	No

I have completed the Work Site Safety online course on pandemic awareness. (For those that haven't completed prior to entry, this Work Site Safety course will be shown during initial on-site orientation.)

Signature:	
Date Completed:	Certificate #:

I agree to immediately notify my supervisor if I begin to experience symptoms of COVID-19, or become aware that I have had close contact with a person who has symptoms of COVID-19 in the past 14 days.

I have read and understood the 2020 StrikePoint Gold Occupational Health & Safety COVID-19 Guidelines and agree to comply with the Guidelines. I understand that failure to comply with the Guidelines is grounds for removal from the Project and termination of my contract with StrikePoint Gold.

Signature: _____ Date: _____



2019 Novel Coronavirus (COVID-19)



Do you have a **FEVER**, or **NEW COUGH** or **DIFFICULTY BREATHING**?



Clean your hands



Put on a mask



Report to reception or a health care provider



Coronavirus COVID-19

BC Centre for Disease Control | BC Ministry of Health



REDUCE THE SPREAD OF COVID-19



PHYSICAL DISTANCING IN PROGRESS

**Maintain a distance of at least
2 arms lengths from others.**



Ministry of
Health



BC Centre for Disease Control

**If you have fever, a new cough, or are
having difficulty breathing, call 8-1-1.**





COVID-19

Hand Hygiene

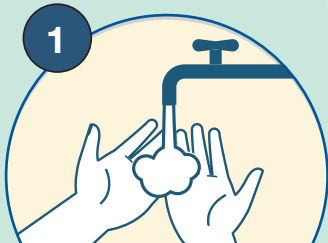
SOAP OR ALCOHOL-BASED HAND RUB: Which is best?

Either will clean your hands:
use soap and water if hands are visibly soiled.

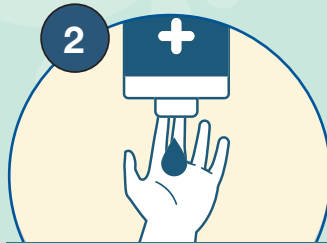


Remove hand and wrist jewellery

HOW TO HAND WASH



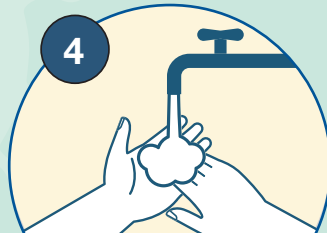
1
Wet hands with warm (not hot or cold) running water



2
Apply liquid or foam soap



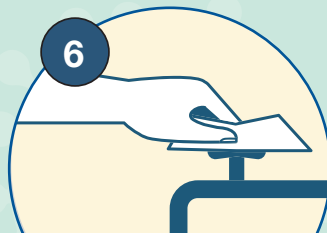
3
Lather soap covering all surfaces of hands for 20-30 seconds



4
Rinse thoroughly under running water

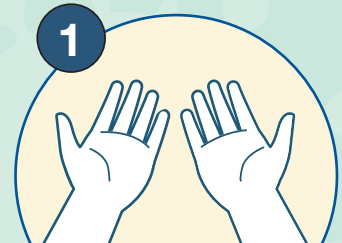


5
Pat hands dry thoroughly with paper towel

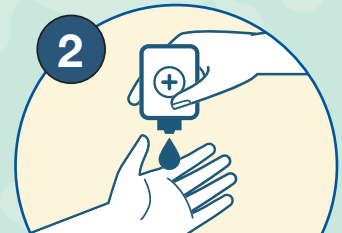


6
Use paper towel to turn off the tap

HOW TO USE HAND RUB



1
Ensure hands are visibly clean (if soiled, follow hand washing steps)



2
Apply about a loonie-sized amount to your hands



3
Rub all surfaces of your hand and wrist until completely dry (15-20 seconds)

COVID19_HH_001